

FI057

Fitting Instruction for Differential Strengthening Kit
For fitment with body detached RTR7012-1K
For fitment with body in situ RTR7012-2K

Note: - Read all these instructions before commencing work to avoid making costly mistakes.

Before You Start

It is essential that these Instructions should be fully read, referring where necessary to the appropriate original Triumph Workshop Manuals and/or Parts Books for the relevant car, prior to commencing work. Copies of these manuals in Paper form or on CD are available from Revington TR if required.

Language

These Instructions are written in the English language and assume that the reader has a full competence in that Language and the technical terms and Safety Advice used therein. If there is any doubt of interpretation of any of these instructions, then advice should be sought from Revington TR or other competent authority.

Safety

Your Safety and that of the users of the vehicle to which these products are to be fitted and all other Road Users and members of the General public is paramount. Accordingly the fitment of these products should only be undertaken by persons who are competent skilled vehicle technicians and will execute the work in accordance with accepted standards of safety and quality of workmanship. All work should be undertaken with the correct tools, which must be in good and serviceable condition. Where applicable reference should be made to all safety instructions contained in the original Triumph Workshop Publications.

Note 1. This kit requires welding, never weld alone, always have a firewatcher at hand. Revington TR strongly recommends removing the petrol tank and storing it outside during the welding operation. Welding is an extremely dangerous operation, only consider this job if you are fully confident, If not seek professional assistance.

Contents

| | |
|---|---|
| Parts List..... | 2 |
| Preparation | 3 |
| Assembly | 3 |
| Chassis Position Figures | 4 |
| Pictures for Strengthening Kit RTR7012-1K and RTR7012-2K..... | 5 |

Figures

| | |
|--|---|
| Figure 1: Body not fitted | 4 |
| Figure 2: Body in Situ | 4 |
| Figure 3: Typical Front Mounting Cracked in Half | 5 |
| Figure 4: Item 5 Placed Above the Forward Bridge for Use with the Body Removed | 5 |
| Figure 5: Item 7 Before Cutting in Half Placed Under the Forward Bridge for Use with the Body Fitted | 5 |
| Figure 6: Half of Item 7 After Cutting Placed Under the Forward Bridge for Use with the Body Fitted | 5 |
| Figure 7: Half of Item 7 Welded in Place Under the Forward Bridge for Use with the Body Fitted | 5 |
| Figure 8: Item 6 Placed Above the Rear Bridge for Use with the Body Removed | 5 |
| Figure 9: Item 7 Before Cutting in Half Placed Under the Rear Bridge for Use with the Body Fitted | 5 |
| Figure 10: Half of Item 7 After Cutting Placed Under the Rear Bridge for Use with the Body Fitted | 5 |
| Figure 11: Item 3 Placed on the Forward Bridge Body Removed | 5 |
| Figure 12: Item 3 Placed on the Forward Bridge Body Fitted | 6 |
| Figure 13: Item 4 Placed on the Rear Bridge Body Removed | 6 |
| Figure 14: Item 4 Placed on the Rear Bridge Body Fitted | 6 |
| Figure 15: Item 2 Placed on the Rear Bridge Body Removed | 6 |
| Figure 16: Item 2 Placed on the Rear Bridge Body Fitted | 6 |
| Figure 17: Item 2 Welded in Place to the Rear Bridge Body Fitted | 6 |
| Figure 18: Drawing Showing Positioning of Item 1 | 6 |
| Figure 19: Item 1 Placed on Front Mount | 6 |
| Figure 20: Item 1 Welded on the Front Mount | 6 |

A Parts List

Have you got all the parts you need?

Before you start work, please read the Parts List below and check that all items for your car are present. If there are any discrepancies, please notify the Revington TR Parts Department Immediately.

THE REVINGTON TR *DIFF SUPPORT STRENGTHENING KIT* CONSISTS OF: -

| ITEM | PART No. | DESCRIPTION | QTY | CHECK |
|----------------------------------|----------|---|-----|-------|
| Included in both kits: | | | | |
| 1 | RTR1002 | Gusset | 2 | () |
| 2 | RTR7054 | Damper reinforcement plate | 2 | () |
| 3 | RTR7056 | Side plates front pins | 4 | () |
| 4 | RTR7057 | Side plates rear pin | 4 | () |
| Included in Kit RTR7012-1K only: | | | | |
| 5 | RTR7053 | Forward pin top reinforcement on top of bridge | 2 | () |
| 6 | RTR7055 | Rear pin top reinforcement on top of bridge | 2 | () |
| Included in Kit RTR7012-2K only: | | | | |
| 7 | RTR7187 | Forward/Rear Pin top reinforcement under bridge | 4 | () |

B Tools/Equipment required

| ITEM | DESCRIPTION | QTY | CHECK |
|------|------------------------------|-----|-------|
| 1 | ENGLISH SPANNERS AND SOCKETS | A/R | () |
| 2 | TORQUE WRENCH | 1 | () |
| 3 | WELDING EQUIPMENT | 1 | () |
| 4 | PAINT BRUSHES AND PAINT | 1 | () |
| 5 | TROLLY JACK AND AXLE STANDS | 1 | () |
| 6 | GRINDER AND SCRAPERS | 1 | () |

C Additional Parts that May be Required

| ITEM | PART NO. | DESCRIPTION | QTY |
|------|------------|--|-----|
| 1 | SPF0138AVK | TR4A SuperPro Polyurethane Differential Mountings | 1 |
| 2 | SPF0138K | TR5-6 Front SuperPro Polyurethane Differential Mountings | 1 |
| 3 | SPF1992K | TR5-6 Rear SuperPro Polyurethane Differential Mountings | 1 |
| 4 | 107960 | Prop Shaft Bolt | 12 |
| 5 | NY606151 | Nyloc Nut | 12 |

Note: There are 2 versions of this kit, one for fitting with the body assembled onto the chassis (RTR7012-2K) and one with the chassis bare (RTR7012-1K). These instructions assume that unless otherwise stated, the body is in place. The difference between the two kits is that the top plates that reinforce the differential support pins are ideally welded in place on the top of the bridges. However this is not possible with the body in place so a different method has to be employed. In kit RTR7012-2K smaller reinforcing plates are supplied which can be fitted from underneath.

Preparation

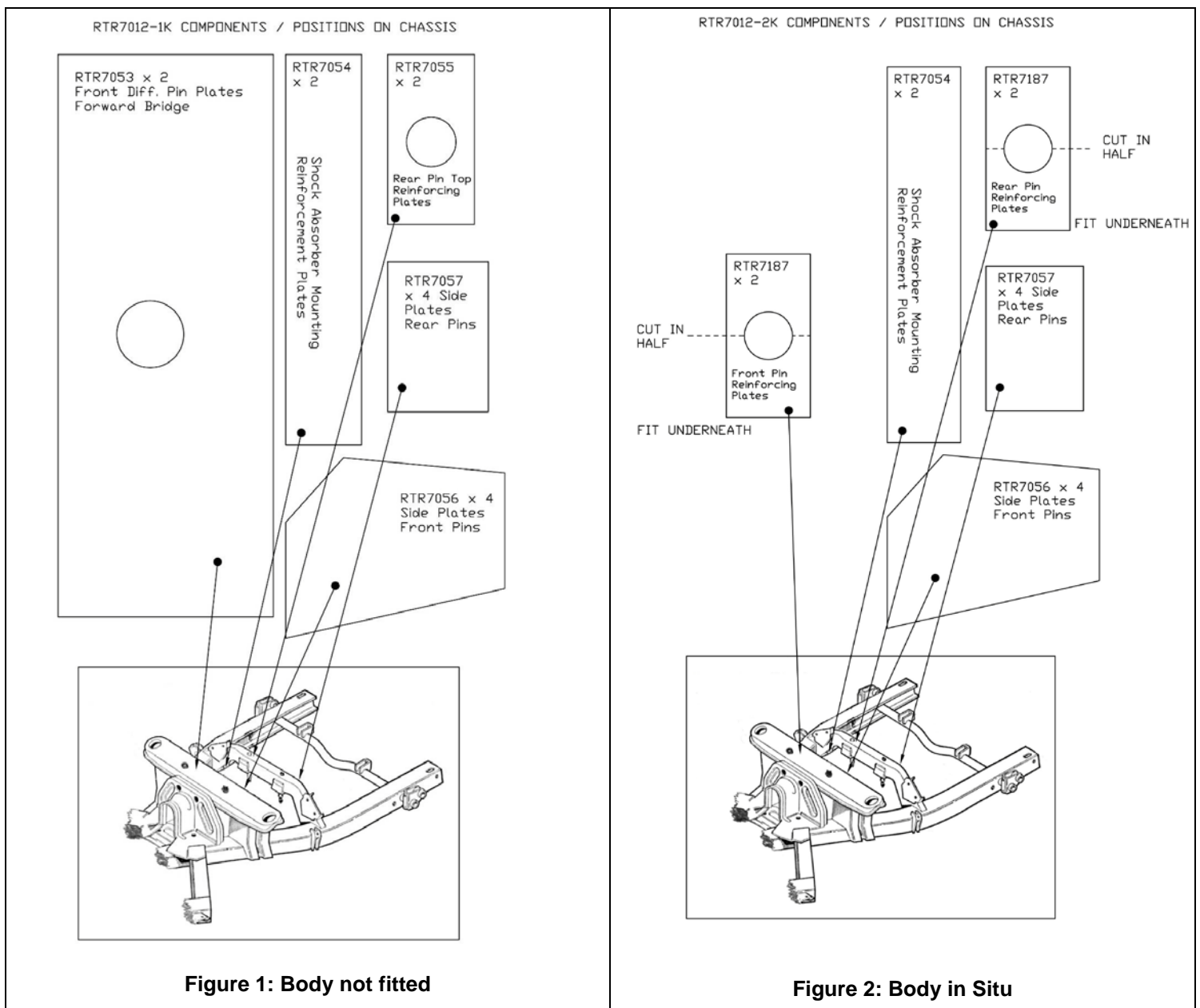
1. Jack the car up and set on stands.
2. Remove the exhaust and differential as necessary, to gain access to the differential chassis mountings.
3. Clean the areas of the chassis to a standard that will result in good welds.
4. Inspect carefully the mountings and the parent chassis, looking for cracks. Figure 3 (Page 5) shows a typical front mounting cracked in half. This will be welded up and ground back prior to fitting the strengtheners.
5. If the pins or brackets require welding to effect a repair it is imperative that with the repair tack welded together, the differential is offered up to the chassis with new SuperPro Polyurethane mountings to ensure that pins and brackets are in the correct place and that enough thread protrudes to allow the correct washers and nyloc nuts to be assembled. See **Table C** Above.

Assembly

1. Refer to Figure 1, if your chassis is bare weld on the components in the positions shown.

2. If your body is attached to the chassis (refer to Figure 2) all the work will have to be done from below. For this to be done **4** of **Item 7** need to be cut in half to be fitted around the pins.
3. After fitting **Items 3** and **4** it is necessary to drill a hole in 1 corner so that wax can be injected and water can get out. **Note:** Don't expect that because you have welded all the way round that water will not get in, it WILL. It is better that the water can get out, rather than having it trapped.
4. The front plate of the differential can also crack. We have provided 2 gussets (**Item 1**) which need to be welded to the front plate in accordance with Figure 18, 19, 20.
5. Reassemble using new Prop Bolts and Nyloc Nuts, see **Table C** Above.

Chassis Position Figures



Pictures for Strengthening Kit RTR7012-1K and RTR7012-2K



Figure 3: Typical Front Mounting Cracked in Half



Figure 4: Item 5 Placed Above the Forward Bridge for Use with the Body Removed



Figure 5: Item 7 Before Cutting in Half Placed Under the Forward Bridge for Use with the Body Fitted



Figure 6: Half of Item 7 After Cutting Placed Under the Forward Bridge for Use with the Body Fitted



Figure 7: Half of Item 7 Welded in Place Under the Forward Bridge for Use with the Body Fitted



Figure 8: Item 6 Placed Above the Rear Bridge for Use with the Body Removed



Figure 9: Item 7 Before Cutting in Half Placed Under the Rear Bridge for Use with the Body Fitted

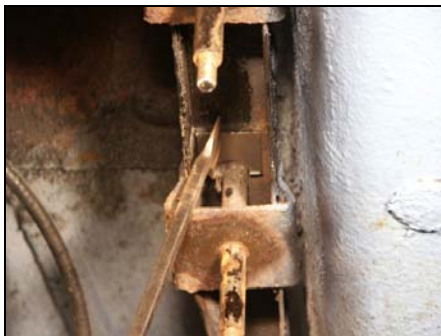


Figure 10: Half of Item 7 After Cutting Placed Under the Rear Bridge for Use with the Body Fitted



Figure 11: Item 3 Placed on the Forward Bridge Body Removed



Figure 12: Item 3 Placed on the Forward Bridge Body Fitted



Figure 13: Item 4 Placed on the Rear Bridge Body Removed



Figure 14: Item 4 Placed on the Rear Bridge Body Fitted



Figure 15: Item 2 Placed on the Rear Bridge Body Removed



Figure 16: Item 2 Placed on the Rear Bridge Body Fitted



Figure 17: Item 2 Welded in Place to the Rear Bridge Body Fitted

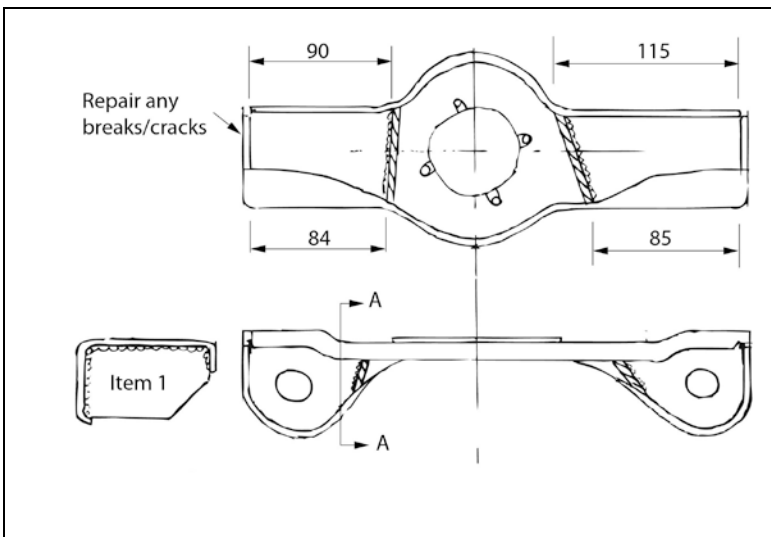


Figure 18: Drawing Showing Positioning of Item 1



Figure 19: Item 1 Placed on Front Mount



Figure 20: Item 1 Welded on the Front Mount